

1 BUILDING SECTION
1/4"=1'-0"

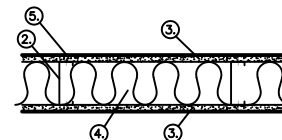
NOTE:
IF A/C ROOFTOP UNITS ARE VISIBLE FROM STREET,
PROVIDE OPAQUE SCREEN.

UL NOTES:

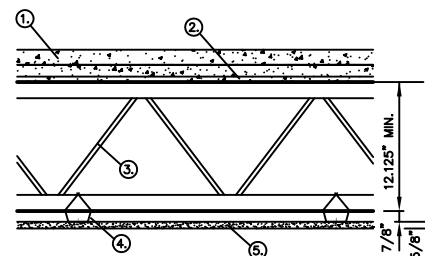
- UL 465**
- FLOOR AND CEILING RUNNER-**
(NOT SHOWN) 25 MSG MIN. GALV. STEEL 1" HIGH, RETURN LEGS 3-5/8" (MIN.), ATTACHED TO FLOOR AND CEILING WITH FASTENERS AT 24" O.C.
 - STEEL STUDS-**
3-5/8" WIDE (MIN.), 1-1/4" LEGS, 3/8" RETURN, FORMED OF 25 MSG GALV. STEEL, MAX. SPACING 24" O.C.
 - GYPSUM WALLBOARD-**
5/8" THICK, 4" WIDE, ATTACHED TO STEEL STUDS AND FLOOR AND CEILING TRACK WITH 1" LONG TYPE "S" SELF-TAPPING STEEL SCREWS SPACED 8" O.C. ALONG EDGES OF BOARD AND 12" O.C. IN THE FIELD OF THE BOARD. JOINTS ORIENTED VERT. AND STAGGERED ON OPPOSITE SIDES OF THE ASSEMBLY.
 - BATTS AND BLANKETS-**
MINERAL WOOL INSULATION, PARTIALLY OR COMPLETELY FILLING STUD CAVITY.
 - JOINT AND TAPE COMPOUND-**
VINYL DRY OR PREMIXED JOINT COMPOUND, APPLIED IN TWO COATS TO JOINTS AND SCREW HEADS; PAPER TAPE, 2" WIDE, EMBEDDED IN FIRST LAYER OF COMPOUND OVER ALL JOINTS. AS AN ALTERNATE, NOMINAL 3/32" THICK GYPSUM VENEER PLASTER MAY BE APPLIED TO THE ENTIRE SURFACE OF CLASSIFIED VENEER BASEBOARD. JOINT REINFORCED.

UL G501

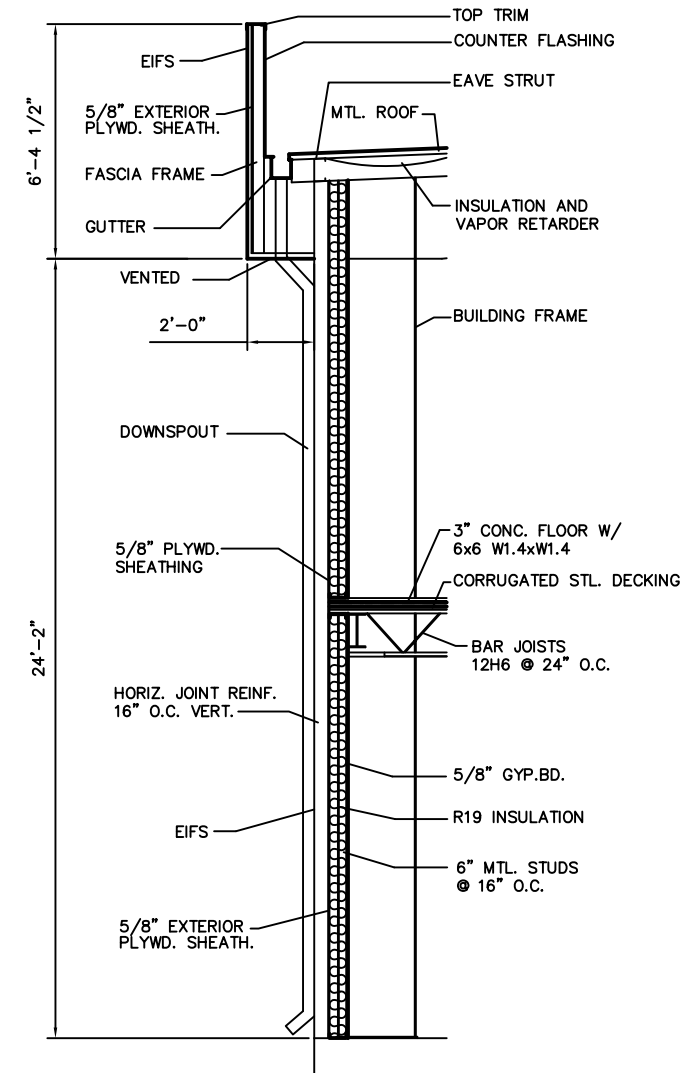
- NORMAL WEIGHT OF CONCRETE-**
CARBONATE OR SILICEOUS AGGREGATE, 150 ± 3 PCF UNIT WEIGHT, 3000 PSI COMPRESSIVE STRENGTH.
- METAL LATH-**
3/8" RIB, 3.4 LB/SQ. YD. EXPANDED STEEL; TIED TO EACH JOIST AT EVERY OTHER RIB, AND MIDWAY BETWEEN JOISTS AT SIDE LAP WITH 18 SWG GALV. STEEL WIRE. AS AN ALTERNATE CORRUGATED-STEEL DECK 9/16" DEEP, 28 MSG MIN. GALV. MAY BE USED. WELDED TO SUPPORTS 15" O.C. USING WELDING WASHERS. THE CONCRETE THICKNESS IS MEASURED FROM THE SURFACE OF THE CONCRETE TO THE TOP OF THE STEEL DECK CORRUGATIONS.
- STEEL JOISTS-**
TYPE 12.4 (MIN) SIZE; SPACED 24" O.C. AND WELDED TO END SUPPORTS. BRIDGING (NOT SHOWN) STEEL BARS, 1/2" DIA., WELDED TO TOP AND BOTTOM CHORD OF EACH JOIST.
- FURRING CHANNELS-**
NO. 26 MSG GALV. STEEL, 2-3/8" WIDE x 7/8" DEEP, SPACED 24" O.C., SECURED TO JOIST WITH A DOUBLE STRAND OF 18 SWG GALV. STEEL WIRE. ADD. PIECES OF CHANNEL 60" LONG LOCATED AT EACH WALLBOARD END JOINT, MIDWAY BETWEEN CONT. CHANNELS AND ATTACHED TO EACH JOIST WITH DOUBLE STRAND 18 SWG GALV. STEEL WIRE. AS AN ALTERNATE, FURRING CHANNELS MAY BE SECURED TO 1-1/2" COLD-ROLLED CHANNELS AT EVERY INTERSECTION WITH DOUBLE STRAND 18 SWG GALV. STEEL WIRE SPACED 48" O.C. ALONG CHANNELS.
- WALLBOARD, GYPSUM-**
5/8" THICK, ATTACHED WITH THE LONG DIMENSION AT RIGHT ANGLES TO FURRING CHANNELS AND SECURED TO EACH CHANNEL WITH 1" LONG WALLBOARD SCREWS 12" O.C. ONE SCREW USED TO ATTACH ADJACENT BOARDS TO EACH END OF ADD. FURRING CHANNEL. FOR WALLBOARD OTHER THAN 48" WIDE, ADD. CHANNEL TO EXTEND MIN. OF 6" PAST THE END OF THE END JOINT. JOINT TREATMENT NOT REQ'D FOR THIS RATING EXCEPT FOR TAPERED, ROUNDED-EDGE WALLBOARD WHERE EDGE JOINTS ARE COVERED WITH PAPER TAPE AND JOINT COMPOUND. AS AN ALTERNATE, NOM. 3/32" THICK GYPSUM VENEER PLASTER MAY BE APPLIED TO THE ENTIRE SURFACE OF CLASSIFIED VENEER BASEBOARD. JOINTS REINFORCED.
- WALLBOARD SCREW-**
NO. 6 FLATHEAD, SELF-TAPPING, SHEET METAL SCREWS 1" LONG SPACED 12" O.C. SCREWS SHALL BE DRIVEN NO FARTHER THAN SLIGHTLY (NOT DEEPER THAN 1/64") INTO THE EXPOSED SURFACE OF THE WALLBOARD.



3 1 HOUR FIRE-WALL (U465)
1-1/2"=1'-0"



4 1 HOUR FLOOR SEPARATION (UL G501)
1-1/2"=1'-0"



2 WALL SECTION
3/8"=1'-0"

BUILDING SECTION

LEVEL 10 MARKETING
OAK HARBOR BLVD.
SLIDELL, LA

LEVEL 10 MARKETING BUILDING

DAMMON ENGINEERING, INC.
1095 FLORIDA AVENUE 985-649-5632 SLIDELL, LA. 70458
DAMMONENGINEERING.COM

SCALE: AS NOTED

FILE:

JOB NO. 1675

DATE: 04-07-05

SHEET

A-3

OF